

Henfield Road Wimbledon, SW19 3HU

£450,000 Leasehold - Share of Freehold

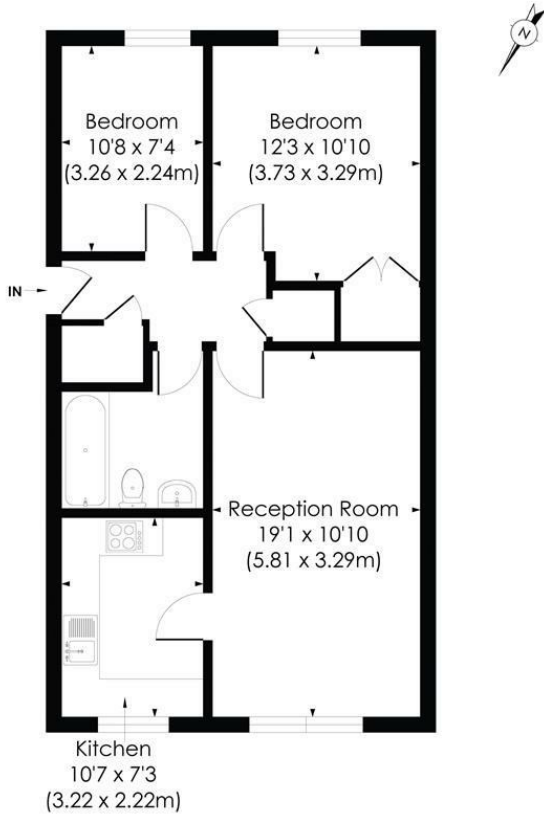


This share of freehold two bedroom purpose built flat offers good size accommodation and is situated in a popular residential side road, just off Merton Hall Road and close to Dundonald Park, within easy reach of Wimbledon Town Centre with all of its shopping, transport and recreational facilities. The flat benefits from gas central heating and its own parking space - an early viewing is highly recommended.

HENFIELD ROAD, SW19

Approx. Gross Internal Floor Area

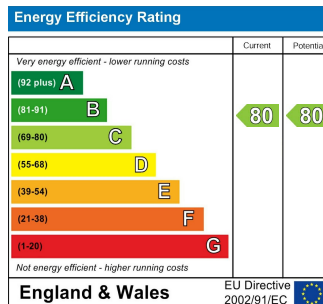
649 Sq. ft/60.31 Sq. m



This floor plan has been prepared for the purpose of illustration only in accordance with the latest RICS code of measuring practice and is not to scale. All measurements and areas are approximate and whilst every effort has been made to ensure the accuracy of the plan contained here, no responsibility is taken for any error, omission or misstatement.

© Pixangle Property Marketing Ltd. info@pixangle.com Tel: 0208 870 2118

- No Onward Chain
- Two Bedroom Flat
- Off Street Parking
- Dundonald Park Area
- Excellent Transport Links
- Share Of Freehold - Underlying Lease Length 999 from 16/12/10
- Service Charge - £1890.04 (per annum) Building Insurance - £367 per annum
- Ground Rent - Nil
- Current EPC Rating - C
- Council Tax Band - D



For Free Mortgage Quote and Best Mortgage Rates, call an Ellisons Mortgage Advisor on 020 8944 9494



Although these particulars are believed to be correct, their accuracy is not guaranteed and they do not form part of any contract.

Celebrating 30 years of successful Sales and Lettings in Merton

